

Virginia Band Warm-Ups/Slurs

A

Section A consists of two staves of music in 4/4 time, key of D major. The first staff contains four measures of music, each with a slur over a pair of notes (D4 and E4) and a quarter rest. The second staff contains four measures, each with a slur over a pair of notes (D4 and E4) and a quarter rest. The notes are written on a treble clef staff with a key signature of one sharp (F#).

B

Section B consists of four staves of music in 4/4 time, key of D major. The first staff contains four measures, each with a slur over a pair of notes (D4 and E4) and a quarter rest. The second staff contains four measures, each with a slur over a pair of notes (D4 and E4) and a quarter rest. The third staff contains four measures, each with a slur over a pair of notes (D4 and E4) and a quarter rest. The fourth staff contains four measures, each with a slur over a pair of notes (D4 and E4) and a quarter rest. The notes are written on a treble clef staff with a key signature of one sharp (F#).

C

Section C consists of three staves of music in 4/4 time, key of D major. The first staff contains four measures of eighth-note patterns with slurs. The second staff contains four measures of eighth-note patterns with slurs. The third staff contains four measures of eighth-note patterns with slurs. The notes are written on a treble clef staff with a key signature of one sharp (F#).

Clarinet

The first staff of music begins with a treble clef and a key signature of two sharps (F# and C#). It starts with a quarter rest, followed by a series of eighth and sixteenth notes, including some beamed sixteenth notes. The staff concludes with a quarter rest.

D

The second staff continues the melodic line with eighth and sixteenth notes, featuring some slurs and ties. It ends with a quarter rest.

The third staff features a more complex rhythmic pattern with many beamed sixteenth notes and slurs, maintaining the melodic flow.

The fourth staff continues the intricate melodic line with beamed sixteenth notes and slurs.

The fifth staff continues the melodic development with beamed sixteenth notes and slurs.

E

The sixth staff begins with a quarter rest, followed by a melodic line of eighth and sixteenth notes.

The seventh staff continues the melodic line with eighth and sixteenth notes, some with ties.

The eighth staff features a melodic line with eighth and sixteenth notes, including some slurs.

C2

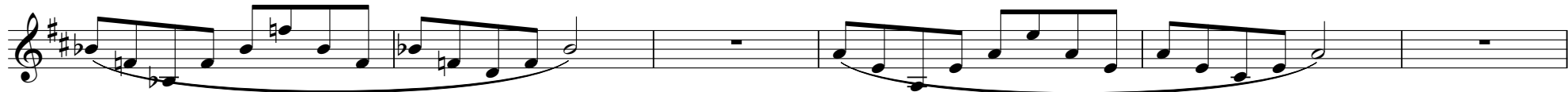
The ninth and final staff on the page continues the melodic line with eighth and sixteenth notes, ending with a quarter rest.



D2



E2



Clarinet

Musical score for Clarinet, page 4. The score is written on a single staff with a treble clef and a key signature of one sharp (F#). It consists of 12 measures. The first measure contains a melodic line starting on G4. The second measure continues the melody. The third measure has a whole note G4. The fourth measure is a whole rest. The fifth measure contains a complex chordal texture with multiple notes. The sixth measure continues this texture. The seventh measure is a whole rest. The eighth measure continues the chordal texture. The ninth measure continues the texture. The tenth measure continues the texture. The eleventh measure continues the texture. The twelfth measure ends with a double bar line.