

# Virginia Band Warm-Ups/Slurs

A

Section A consists of two staves of music in 4/4 time. The first staff contains four measures of music with slurs over pairs of notes. The second staff contains four measures of music with slurs over pairs of notes, including some rests.

B

Section B consists of two staves of music in 4/4 time. The first staff contains four measures of music with slurs and accents. The second staff contains four measures of music with slurs and accents.

C

Section C consists of four staves of music in 4/4 time. The first staff contains four measures of music with slurs and accents. The second staff contains four measures of music with slurs and accents. The third staff contains four measures of music with slurs and accents. The fourth staff contains four measures of music with slurs and accents.

## Xylophone/Marimba

**D**

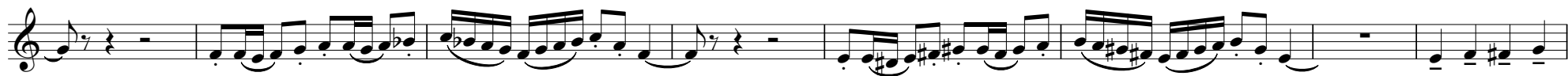
Musical score for Xylophone/Marimba, section D. The score consists of four staves of music. The first staff begins with a treble clef and a key signature of one sharp (F#). The music features a mix of eighth and sixteenth notes, often beamed together in groups. There are several rests throughout the section. The second and third staves continue the melodic and rhythmic patterns. The fourth staff concludes the section with a final note and a fermata.

**E**

Musical score for Xylophone/Marimba, section E. The score consists of three staves of music. The first staff begins with a treble clef and a key signature of one flat (Bb). The music features a mix of eighth and sixteenth notes, often beamed together in groups. There are several rests throughout the section. The second and third staves continue the melodic and rhythmic patterns.

**C2**

Musical score for Xylophone/Marimba, section C2. The score consists of two staves of music. The first staff begins with a treble clef and a key signature of one flat (Bb). The music features a mix of eighth and sixteenth notes, often beamed together in groups. There are several rests throughout the section. The second staff continues the melodic and rhythmic patterns.



**D2**



**E2**

