

Bass guitar

Strike up the Band

George Gershwin
arr. Peter Kleine Schaars



$\text{♩} = 120$

7 whistle **A**

10 7

B
mp

24

C
cresc. *f* **3**

D *f*

E *f*

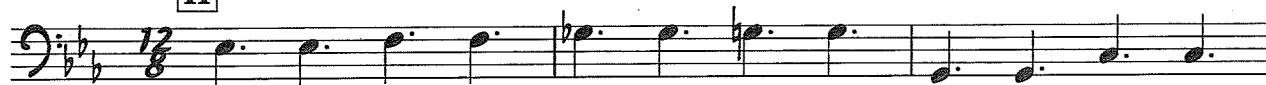
43

F rit. accel.

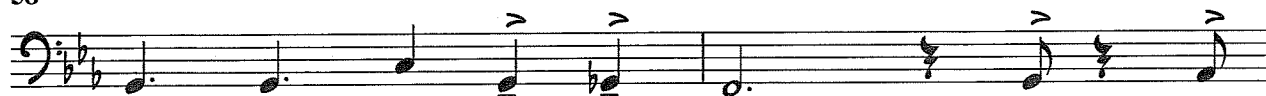
G rit. *f* **12**

Bass guitar

H Swing



58



60

